

# Finishes

UPHOLSTERY

METALLICS

WOOD

POLYPROPYLENE

**Mobboli**

FINISHES

# UPHOLSTERY

Cosv (Group A)

100% Polypropylene /  $\geq 100,000$  Martindale Cycles



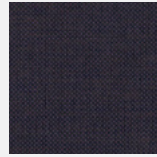
CV 5



CV 17



CV 59



CV 91



CV 242



CV 348



CV 4025



CV 4026



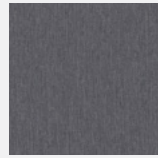
CV 15



CV 86



CV 7



CV 29



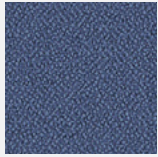
CV 653

FINISHES

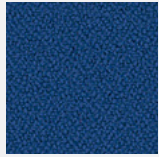
UPHOLSTERY

Basic F.R. (Group A)

100% Polyester F.R. / ≥120,000 Martindale Cycles



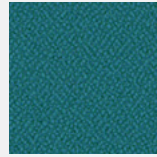
BS 04  
Blue Grey



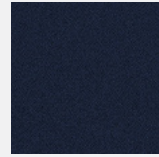
BS 05  
Blue



BS 009  
Black



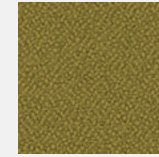
BS 011  
Dark Turquoise



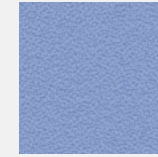
BS 26  
Marine



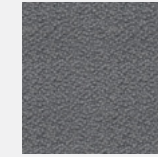
BS 94  
Grey



BS 77  
Green



BS 84  
Light Blue



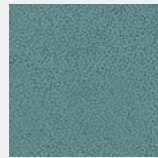
BS 086  
Perle Grey



BS 88  
Yellow



BS 105  
Red



BS 301  
Turquoise



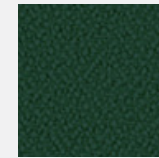
BS 422  
Beige



BS 43  
Greenery



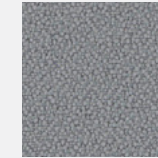
BS 103  
Green



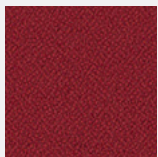
BS 45  
Bottle



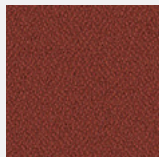
BS19  
Lead grey



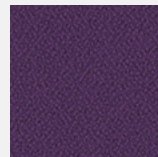
BS106 ·  
Strong Red



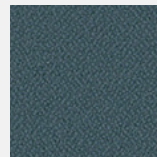
BS106 ·  
Strong Red



BS 027  
Terracotta



BS 292  
Purple



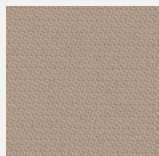
BS 47  
Island (Green)

Visual FR (Group A)

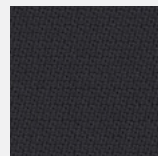
100% Polyester F.R. / ≥120,000 Martindale Cycles



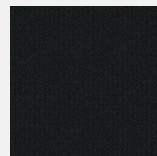
VIS 001 Light  
Grey



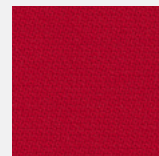
VIS 002 Beige



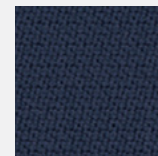
VIS 005 Grey



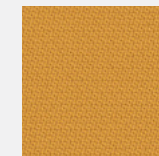
VIS 006 Black



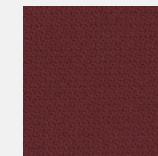
VIS 012 Red



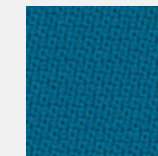
VIS 025 Blue



VIS 008  
MUSTARD



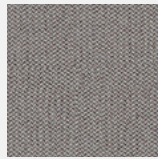
VIS 013 · WINE



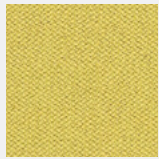
VIS 024 ·  
TURQUOISE

Era (Group B) \*

Camira Fabrics 100% Polyester /  $\geq 100,000$  Martindale Cycles



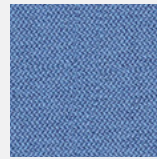
CSE02  
Generation



CSE03  
Lifetime



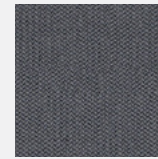
CSE06  
Cycle



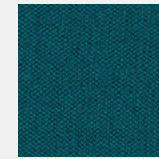
CSE08  
Chapter



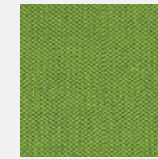
CSE11  
Forecast



CSE13  
Present



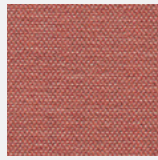
CSE15  
Stage



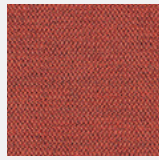
CSE16  
Timelapse



CSE19  
Calendar



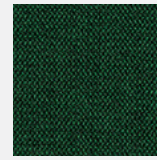
CSE26  
Turn



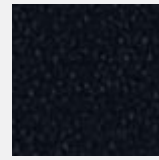
CSE29  
Experience



CSE31  
Splitsecond



CSE35  
Signature



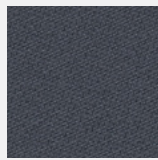
CSE14  
Forward



CSE34  
Endurance

Just (Group B) \*

Gabriel Fabrics 98% Post-consumer recycled polyester 2% Polyester /  $\geq 70,000$  Martindale Cycles



JU60119



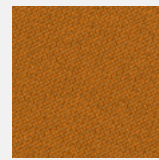
JU66180



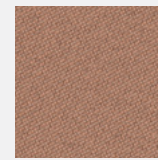
JU68201



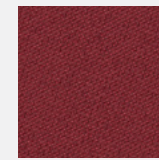
JU68200



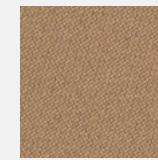
JU63095



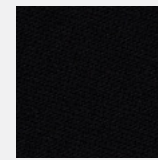
JU63094



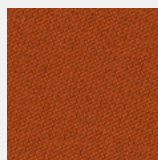
JU64206



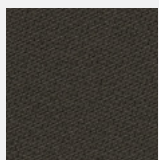
JU61178



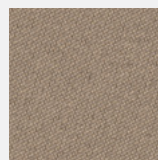
JU60999



JU63096



JU62091



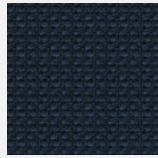
JU61176

\* For other colours in the collection, please consult delivery time and supplement.

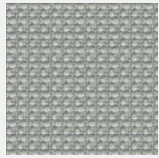
---

Manhattan (Group B) \*\*

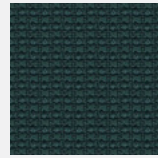
Camira Fabrics 100% Post-consumer recycled polyester / ≥100,000 Martindale Cycles



Y1026 Rubin



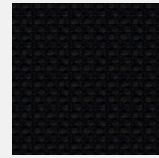
Y1385 Jackson



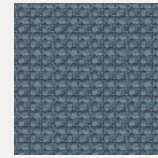
Y1384 Penn



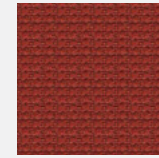
Y1363 Broadway



Y1009 Macys



Y1389 Sacks



Y1381 Soho

---

Relife FR (Grupo B)

100% Post-consumer recycled polyester / ≥100.000 Martindale Cycles



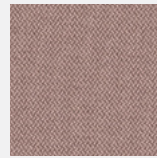
RF1 · Air



RF3 · Sand



RF5 · Soil



RF8 · Pink



RF14 · Island

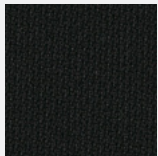


RF15 · Ocean

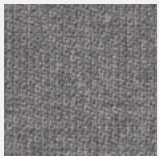
---

Visual CS (Grupo B)

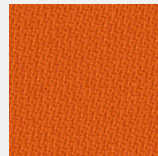
100% Trevira® CS / ≥120.000 Martindale Cycles



VICS1006 Black



VIMCS1101  
Light Grey  
Melange

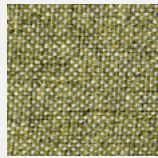


VICS1028 Orange

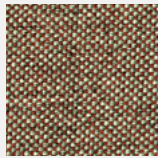
\*\* Please consult delivery time. For other colours in the collection, please consult delivery time and supplement.

Rivet (Grupo C) \*\*

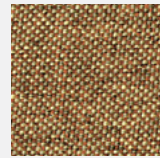
Camira Fabrics 100% Post-consumer recycled polyester / ≥80.000 Martindale Cycles



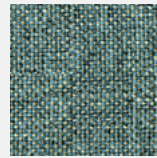
Alloy 05



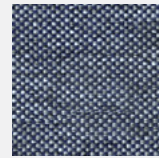
Abaid 13



Cooper 14



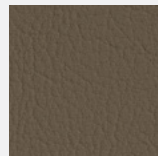
Verdigris 21



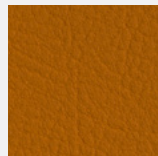
Crucible 24

Valencia (Group C) \*

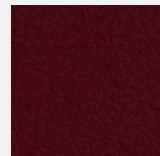
Spradling Fabrics 100% Vinyl / Flame Retardant M2 / ≥300,000 Martindale Cycles



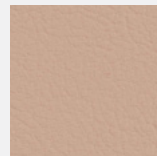
VAL0034 · Taupe



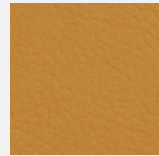
VAL0035 · Terracota



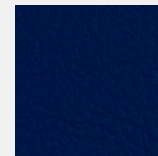
VAL2062 · Port



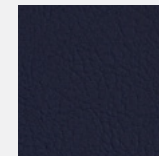
VAL2113 · Lotus



VAL2116 · Camel



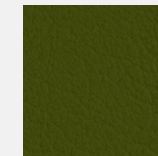
VAL3067 · Delft



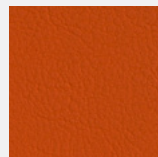
VAL3068 · Marine



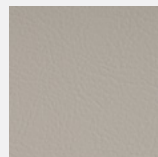
VAL4052 · Lichtgrau



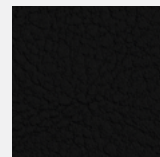
VAL5001 · Oliva



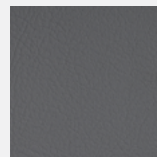
VAL6003 · Nectarine



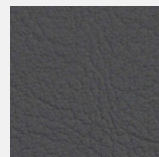
VAL8032 · Weiss



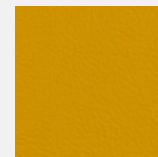
VAL9035 · Schwarz



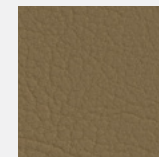
VAL4045 · Perle



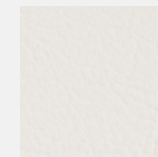
VAL5065 · Petrol



VAL2111 · Squash



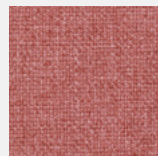
VAL1050 · Beige



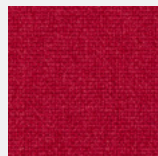
VAL9607 · Pure White

Medley (Group C) \*

Gabriel Fabrics 100% Recycled polyester / ≥75,000 Martindale Cycles



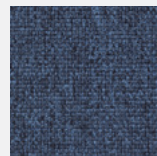
ME63064



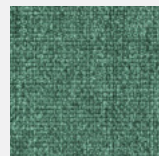
ME64019



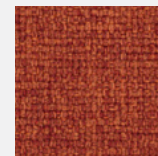
ME66008



ME66010



ME67054

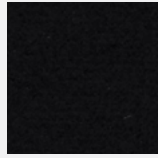


ME63017

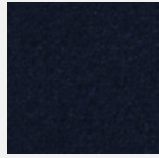
\* For other colours in the collection, please consult delivery time and supplement.

Velvet Plus (Group C)

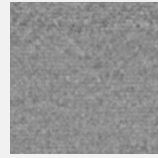
100% Polyester F.R. /  $\geq 60,000$  Martindale Cycles



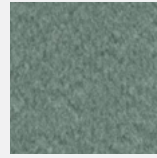
VP 23



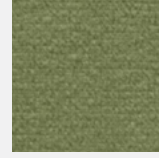
VP 39



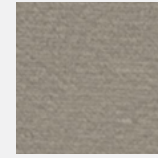
VP 20



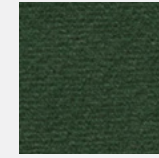
VP 11



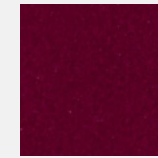
VP 37



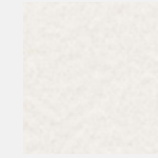
VP 22



VP 12



VP 33



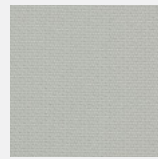
VP 01



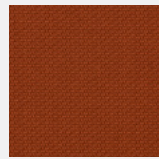
VP 21

Felicity (Group C.1) \*

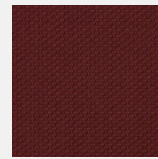
**Gabriel Fabrics** 100% Post-consumer recycled polyester /  $\geq 90,000$  Martindale Cycles



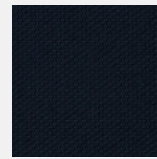
FE60105



FE63089



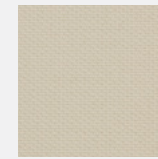
FE64191



FE66164



FE61164



FE61163

\* For other colours in the collection, please consult delivery time and supplement.

Step (Group C.1) \*

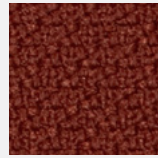
Gabriel Fabrics 100% Trevira CS /  $\geq 100,000$  Martindale Cycles



Step 61103



Step 62057



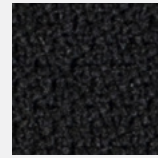
Step 63075



Step 67072



Step 65011



Step 60999



Step 60004



Step 60011



Step 68119

Step Melange (Group C.1) \*

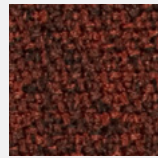
Gabriel Fabrics 100% Trevira CS /  $\geq 100,000$  Martindale Cycles



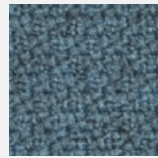
Step Melange  
61103



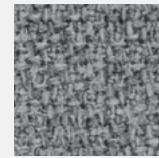
Step Melange  
62057



Step Melange  
63075



Step Melange  
67072



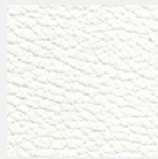
Step Melange  
60004



Step Melange  
60011

Leather (Group E)

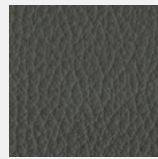
100% Cowhide



179 White



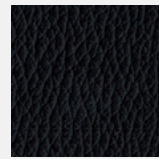
102 Sand



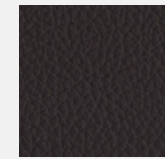
121 Grey



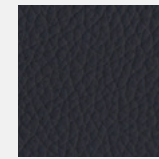
142 Foal



Black



125 Chocolate



114 Blue

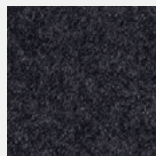
\* For other colours in the collection, please consult delivery time and supplement.



---

## Synergy (Group F) \*

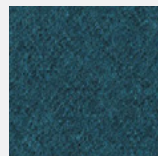
**Camira Textil** 95% Virgin Wool, 5% Polyamide / ≥100,000 Martindale Cycles



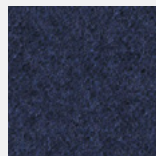
LDS17  
Mix



LDS16  
Partner



LDS59  
Group



LDS62  
Alike

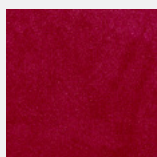
---

## Velvet (Group F)

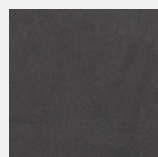
100% Polyester F.R. / ≥80,000 Martindale Cycles



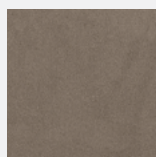
VT Marine



VT Boudeux



VT Dark Grey



VT Brown



VT Green



VT Pink

---

## Revive 1 (Request RRP/m) \*

\* Please ask for delivery terms.

## Remix 3 (Request RRP/m) \*

\* Please ask for delivery terms.

**Kvadrat** 100% Recycled polyester F.R. / ≥60,000 Martindale Cycles

**Kvadrat** 90% new wool (worsted), 10% nylon / ≥100,000 Martindale Cycles

### Tolerances

There may be considerable differences between the printing shade and the actual colour. This is why reference is made to colour. Variations in tonality may occur from one tinting to another.

\* For other colours in the collection, please consult delivery time and supplement.

## FINISHES

# METALLICS

### Standard

---



RAL 9016  
White



RAL 9005  
Black

### Texturized colours

---



RAL 5011  
Blue Night



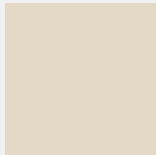
RAL 6005  
Moss Green



RAL 7016  
Anthracite

### Semi-gloss solid colours

---



RAL 1013  
Oyster White



RAL 1019  
Mink



RAL 1032  
Mustard



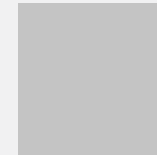
RAL 3003  
Red



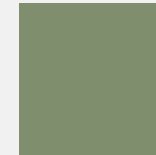
RAL 5014  
Light Blue



RAL 5020  
Ocean Green



RAL 7004  
Grey



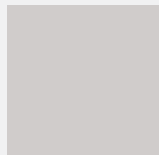
RAL 6013  
Light Green

### Semi-matt solid colours

---



NCS 3020-Y80R  
Powder



NCS 1502-B  
Light Grey



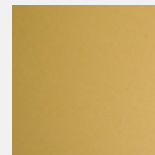
RAL 8004  
Terracota



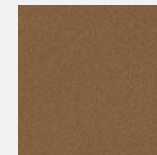
RAL 3009  
Oxide Red

### Metallized

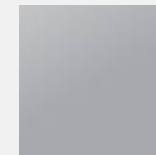
---



GOLD (smooth)



COPPER  
(texturized)



SILVER (smooth)  
RAL 9006

There can be considerable differences between the printing tone and the actual colour. This is why we refer to the closest colour in RAL or NCS.

FINISHES

# WOOD

(Consult in each collection)

Lacquered (13 mm MDF)



RAL 9016  
White (B)



RAL 9005  
Black (N)



RAL 5011  
Blue Night (BN)



RAL 6005  
Moss Green (MG)



RAL 7016  
Anthracite (AN)



RAL 1013  
Oyster White (OW)



RAL 1019  
Mink (VI)



RAL 1032  
Mustard (MO)



RAL 3003  
Red (RO)



RAL 5014  
Light Blue (CE)



RAL 5020  
Ocean Green (VO)



RAL 7004  
Grey (GR)



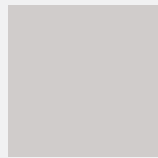
RAL 8004  
Terracota



RAL 3009  
Oxide Red



NCS 3020-Y80R  
Powder



NCS 1502-B  
Light Grey

There can be considerable differences between the printing tone and the actual colour. This is why we refer to the closest colour in RAL or NCS.

FINISHES

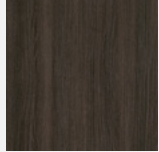
# WOOD

(Consult in each collection)

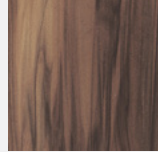
## Laminated



LIGHT OAK (RB)



DARK OAK (RBO)



COUTURE (CO)



CALACATTA (CC)



ANTI-FINGERPRINT  
ANTHRACITE (GR)



ANTI-FINGERPRINT  
BLACK (N)

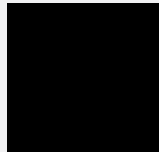


WHITE (B)

## Compacmel



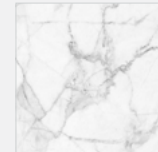
WHITE (B)



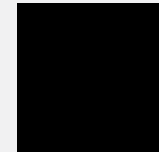
BLACK (N)



WHITE (FB)



CALACATTA (FCC)

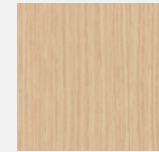


BLACK (FN)

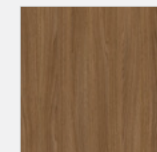
## Melamine



WHITE



LIGHT OAK

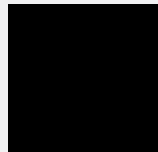


WALLNUT

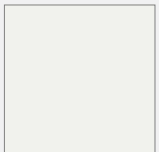
# POLYPROPYLENE

Cap Plastic - Recycled polypropylene seat and backrest finishes

## Standard



RAL 9005 Black (N)

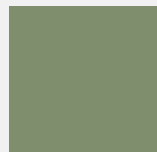


RAL 9016 White (B)

## Colours



RAL 1019 Mink (VI)



RAL 6013 Green (VE)



RAL 8004  
Orange-brown (OR)



RAL 7004 Grey (GR)

There can be considerable differences between the printing tone and the actual colour. This is why we refer to the closest colour in RAL or NCS.

# WOOD FINISHES COLLECTIONS

Estratificado Oak (RB)	Estratificado Dark Oak (RBO)	Estratificado Coture (CO)	Estratificado White (B)	Estratificado Antifingerprint Black (N)	Estratificado Antifingerprint Grey (GR)	Estratificado Calacatta (CC)	Compacmel White (B)	Compacmel Black (B)	Fenolico HPL White (FB)	Phenolic HPL Black (FN)	Phenolic HPL Calacatta (FCC)	Laquered Colours	Melamine White	Melamine Oak	Melamine Walnut	Laminated Varnished Beech	Varnished solid wood Oak	Varnished solid wood Dark Oak
------------------------	------------------------------	---------------------------	-------------------------	---	---	------------------------------	---------------------	---------------------	-------------------------	-------------------------	------------------------------	------------------	----------------	--------------	-----------------	---------------------------	--------------------------	-------------------------------

## TABLE

WIDE / COMTE	●		●			●	●	●	●	●	●	●						
PLOMA												●	●	●	●			
CUA	●	●		●		●		●										
CONEK TABLE	●				●													

## CHAIR

HUG	●	●		●														
CAP	●	●		●		●												
NEXOS												●				●		
ALPE ARMS																	●	●
MOMMO ARMS																	●	●
HUG ARMS	●	●		●														
PEACH BASE												●					●	
CHELSEA/ TALAIA LEGS																	●	●